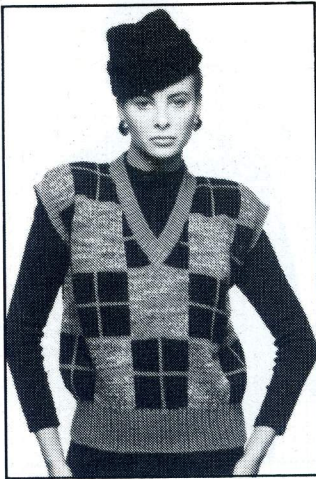


# 11 WOMAN'S INTARSIA SWEATER



## PATTERN RATING

\*\*\* For experienced knitters.

## MACHINES

This pattern is suitable for chunky machines.

## MATERIALS

Sirdar Country Style Chunky.  
3 [3, 4] × 50g balls in Warm Cerise (MC).  
Sirdar Mosaic.  
3 [3, 4] × 50g balls in Granite Grey (A).  
Sirdar Wash 'n' Wear Aran.  
3 [4, 4] × 40g balls in Black (B).  
Pair 6 mm knitting needles.

*Country Style Chunky and Wash 'n' Wear Aran are 45% Acrylic, 40% Bri-Nylon, 15% Wool. Mosaic is 60% Acrylic, 16% Nylon, 12% Wool, 12% Mohair. If you have difficulty obtaining this yarn and would like a list of your local stockists, please write to Sirdar plc, Flanshaw Lane, Alverthorpe, Wakefield, West Yorkshire WF2 9ND.*

## SILVER GAUGE READING

Country Style Chunky and Wash 'n' Wear Aran are very heavy yarns, Mosaic is heavy yarn.

## MEASUREMENTS

To fit bust 87 [92, 97] cm, 34 [36, 38] in.  
Actual size 102 [107, 112] cm, 40¼ [42, 44] in.  
Length to shoulder 53 cm, 21 in.

*Instructions are written for the smallest size, larger sizes follow in square brackets. If only one figure is given, it applies to all sizes.*

## TENSION

17 stitches and 29 rows to 10 cm, 4 in measured over Intarsia (tension dial setting approximately 3, keyplate 2).

*For perfect results, please check your tension carefully.*

## ABBREVIATIONS

See page 4.

## KNITTING NOTES

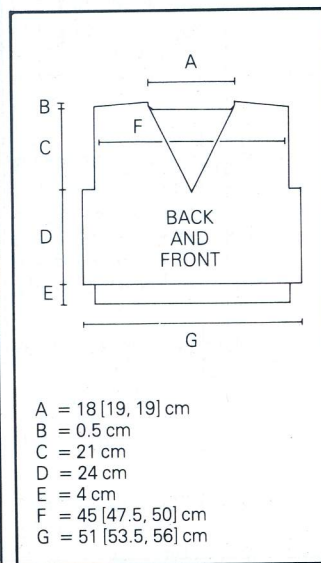
We used knit side of knitting as right side of garment.  
Ns in NWP are counted as sts throughout.

Before shaping armholes, push N 38 at left and N 39 at right to WP.

When casting off, make chains in spaces where Ns are in NWP. Vertical lines in MC are embroidered on after knitting is completed.

## BACK

Push 44 [46, 48] Ns at left and 45 [47, 49] Ns at right of centre 0 to WP. 89 [93, 97] Ns. Push Ns 1, 20 and 39 at right and Ns 19 and 38 at left of centre 0 back to NWP. Using MT and WY, cast on and K a few rows ending with carriage at right. Set RC at 000. Cont in Intarsia patt from chart on page 38 \*.



K 70 rows. Work measures 24 cm, 9½ in.

#### SHAPE ARMHOLES

Cast off 6 sts at beg of next 2 rows. 77 [81, 85] sts. K 57 rows. RC shows 129.

#### SHAPE NECK

Push 54 [57, 59] Ns at right to HP and cont on rem sts for first side.

K 2 rows.

#### SHAPE SHOULDER

Cast off 12 [12, 13] sts at beg of next row, K 1 row. Cast off rem 11 [12, 13] sts.

With carriage at left, push 31 [33, 33] Ns at left from HP to UWP. Using WY, K a few rows and release from machine.

With carriage at right, push rem Ns from HP to UWP and finish to correspond with first side reversing shapings.

#### FRONT

Work as for back to \*.

K 66 rows. 4 rows less have been worked to armhole than on back.

#### SHAPE NECK

Leave centre N in NWP. Push 44 [46, 48] Ns at left to HP and cont on rem sts for first side.

K 1 row. Dec 1 st at neck edge of next row, K 2 rows.

#### SHAPE ARMHOLE

Cast off 6 sts at beg of next row. Cont to dec at neck edge on every 4th row from previous dec until 23 [24, 26] sts rem, K 6 [2, 2] rows.

#### SHAPE SHOULDER

Cast off 12 [12, 13] sts at beg of next row, K 1 row. Cast off rem 11 [12, 13] sts.

With carriage at left, push rem Ns from HP to UWP and finish to correspond with first side reversing shapings.

#### EMBROIDERY TRIM

Using a tapestry needle and MC, work chain stitch embroidery on right side along laddered stitches, starting at lower edge and working upwards. Catch two ladder 'rungs' for each embroidered stitch.

#### WELTS

Push 83 [86, 92] Ns to WP. With

P side facing, pick up 84 [88, 92] actual sts along lower edge and place on to Ns, dec 1 [2, 0] sts evenly. Unravel WY. Using MT+4 and MC, K 1 row. Thread every 3rd st on to a length of WY. Push empty Ns to NWP. K 26 rows.

\* Push Ns from NWP to WP. Using a latch tool, pick up st from WY, then pick up rem loops as for ribbing and place on to empty Ns. Slip sts on to a 6 mm knitting needle and cast off loosely in rib \*.

#### NECKBAND

Join right shoulder seam.

Push 83 [86, 86] Ns to WP. With P side facing, pick up 39 [42, 42] sts around back of neck and 44 sts down right side of front neck and place on to Ns.

\*\* Using MT+4 and MC, K 1 row. Thread every 3rd st on to a length of WY. Push empty Ns to NWP. K 11 rows. Work as for welts from \* to \* \*\*.

Push 44 Ns to WP. With P side facing, pick up 44 sts up left side of front neck and place on to Ns. Work as for first part from \*\* to \*\*.

#### ARMHOLE BANDS

Join left shoulder and neckband seam.

Push 77 Ns to WP. With P side facing, pick up 77 sts around armhole edge and place on to Ns. Using MT+4 and MC, K 1 row. Thread every 3rd stitch on to a length of WY. Push empty Ns to NWP. K 7 rows. Work as for welts from \* to \*.

#### PRESSING

With wrong side facing, pin out all pieces to measurements given. Press carefully following instructions on ball band.

#### MAKING UP

Join side seams. Sew ends of armhole bands to cast off stitches on back and front. Lap right neckband over left and sew in position.

